

KYOTO ART CENTER RESIDENCY EXCHANGE INFORMATION PACKAGE

1. ABOUT KYOTO ART CENTER

Established in 2000, Kyoto Art Center is a multi-art form arts venue, managed by Kyoto Arts and Culture Foundation. Located in central Kyoto, Kyoto Art Center is housed in a historic converted school building, and includes a number of performance halls, exhibition spaces and artists' studios. It is the hub of a network of visual arts and dance organisations in Kyoto and across Asia. Residents at Kyoto Art Center work alongside other international and Japanese artists and can engage in local cultural activities, such as tea ceremonies, traditional performances and workshops.

Kyoto Art Center website: <http://www.kac.or.jp>



Credit: Kyoto Art Center

2. STUDIO & ACCOMMODATION

The residency facilities include a large studio/workspace inside the Kyoto Art Center, and separate accommodation at a private apartment, located approximately ten minutes walk from the Center.

The amenities provided in the apartment include: a kitchenette, desk, bed with linen and blanket, air-conditioner, private bathroom, TV, refrigerator, microwave, washing machine, hairdryer and internet access.

KYOTO ART CENTER EXCHANGE RESIDENCY INFORMATION PACKAGE – This information package was prepared February 2019, based on material that was as accurate as possible at the time of publication. We will amend this package as new information becomes available.

Families and guests

The apartment would accommodate a single person only, it is not suitable for couples or families. A special request for a larger apartment can be made for residents travelling with family members, however the resident will be responsible for covering the additional cost.

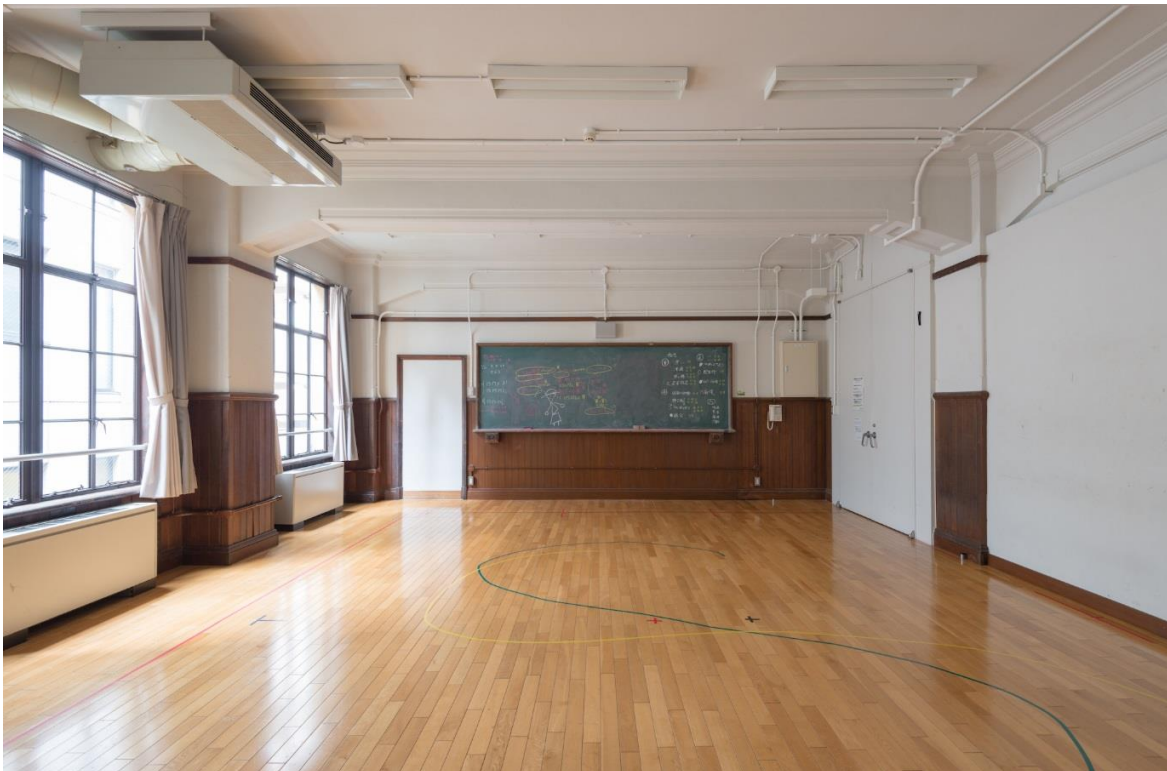
Accessibility

The accommodation is not wheelchair accessible, and has limited flexibility regarding physical access needs. Please contact the Australia Council to discuss your specific needs.

Maintenance and cleaning

Residents are responsible for keeping the apartment clean. There is no regular cleaning service.

Please contact Kyoto Art Center if there are any items broken or in need of replacing, or for any other issues related to the condition of the accommodation and studio.



Credit: Kyoto Art Center

3. LOCAL AREA

General information

Kyoto Art Center is centrally located in Kyoto's Nakagyo Ward, five minutes walk from Shijo Station subway and Karasuma Station on the Kankyu Railway Kyoto-Line.

Kyoto Art Center is located nearby the famous Nishiki Market shopping district and Kamo River, a popular food destination, with hundreds of market stalls, restaurants

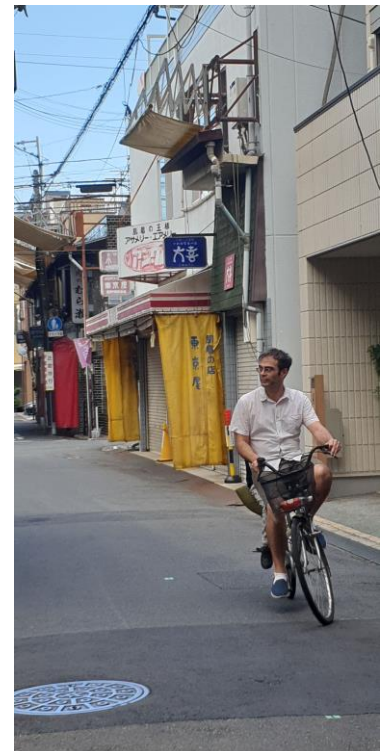
and bars. Here you can try Kyoto's many tofu speciality dishes, elaborate kaiseki multi-course dining, and delicious Japanese staples, from sashimi to okonomiyaki.

There is easy access to a number of museums and galleries from Kyoto Art Center including The Museum of Kyoto, National Museum of Modern Art, Kyoto, Kyoto International Manga Museum and Kyoto City University of Arts Art Gallery, as well as the city's many historic palaces, temples and shrines, including the Nijō Castle and Kyoto Imperial Palace.

Other major cities, including Osaka and Kobe, are accessible from Kyoto by Japan Rail in 1-2 hours.

4. PUBLIC HOLIDAYS - JAPAN 2020

1 January	New Year's Day
13 January	Coming of Age Day
11 February	Foundation Day
23 - 24 February	Emperor's Birthday
20 March	Vernal Equinox Day
29 April - 6 May	Golden Week
23 July	Marine Day
24 July	Sports Day
10 August	Mountain Day
21 September	Respect for the Aged Day
22 September	Autumnal Equinox Day
3 November	Culture Day
23 November	Labour Thanksgiving Day



2019 Kyoto Art Center Residency Exchange artist Ross Manning cycling in Kyoto.
Credit: Michelle Manning.

5. FINANCIAL ARRANGEMENTS

The accommodation and studio are both rent-free. You do not have to pay bond on arrival, however you will need to cover the costs of any serious breakages, losses and damage to the studio, apartment or their contents, should they occur.

6. INSURANCE

Residents are responsible for organising and paying for their own travel insurance for their residency, including health insurance that is required by their country of residence. Proof of cover should be provided to the Australia Council prior to commencing the residency.

Please note the Australia Council will not be held responsible for loss, damage or accidents occurring within or relative to the residency. Artists are responsible for any damage caused to the building or inventory (beyond normal wear and tear) and must report this to Kyoto Art Center immediately.



2018 Kyoto Art Center Residency Exchange artist, Gerwyn Davies, *Kyoto I* (2018) archival inkjet print. Credit: Gerwyn Davies.

7. OVERSEAS TRAVEL ARRANGEMENTS

You make your own travel arrangements, at your own expense, after notification of your successful application for the residency/payment of your grant.

The residency can only occur within the time period nominated by the Australia Council in your agreement. In exceptional circumstances, it is sometimes possible to amend your arrival and departure dates by a reasonable period. If you wish to change your dates, please contact the Australia Council at least four weeks before travelling.

You should plan to arrive at Kyoto Art Center between 10:00am-10:00pm to collect the apartment key.

Please contact Kyoto Art Center at least four weeks before your departure to inform them of your travel details and arrange a time to meet.

Please inform the Australia Council of your itinerary before travelling.

8. VISA REQUIREMENTS

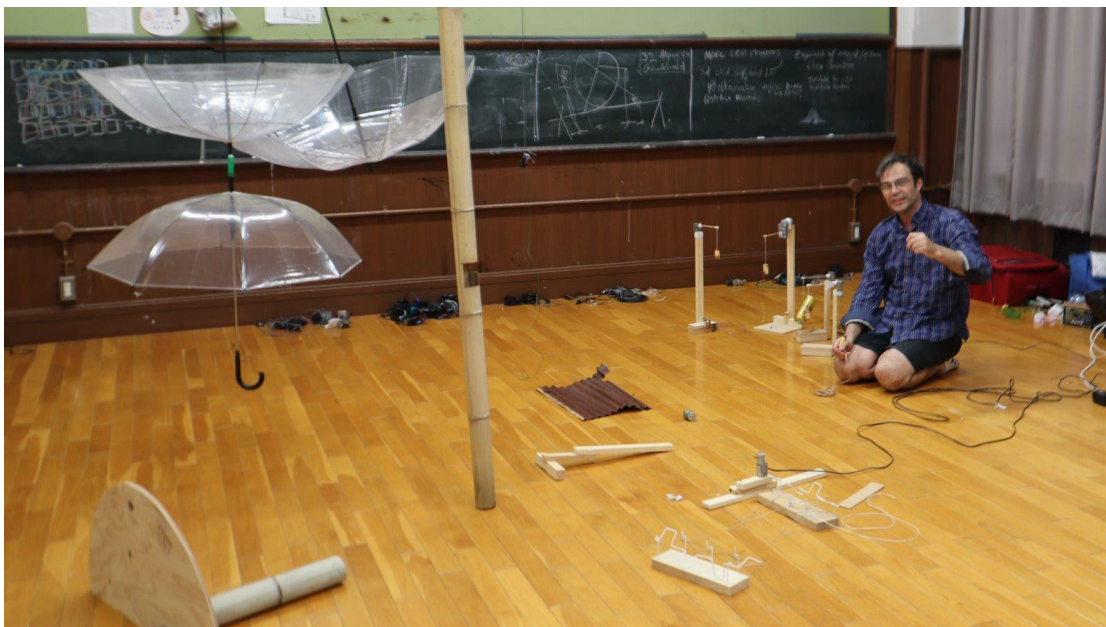
The Australia Council does not advise or provide information on visas. For up-to-date entry visa requirements, you must check with the appropriate embassy or consulate and arrange your visa requirements well in advance of your departure date.

All Australian travellers are strongly encouraged to check the Australian Department of Foreign Affairs and Trade website www.smartraveller.gov.au prior to travel.

9. CONTACT

For further information please contact:

Joanna Bayndrian
International Market Advisor, North Asia
Australia Council for the Arts
+61 2 9215 9152
j.bayndrian@australiacouncil.gov.au



2019 Kyoto Art Center Residency Exchange artist Ross Manning in his studio.
Credit: Michelle Manning.