

Acme London Residency

Located in the urban corner of east London, the Fire Station work/live studios are managed by Acme, an independent non-profit making company established in 1972 that provides low cost studio and living spaces for over 800 professional visual artists in London.

The building is a former LCC Fire Brigade Station, built in 1910. The upper four floors were originally designed as twelve firemen's flats which have been converted into the work/live units.

The Acme Fire Station has housed artists in a close-knit community since 1997, and you may be joining a mixture of artists on a 2-5 year work/live tenancy, a small number of studio tenants and international artists from Switzerland, Germany, Malaysia on a residency, depending on timings.

Your residency

The Australia Council for the Arts London residency provides practical work/live studio accommodation and a programme of support and professional development for an Australian artist for six months.

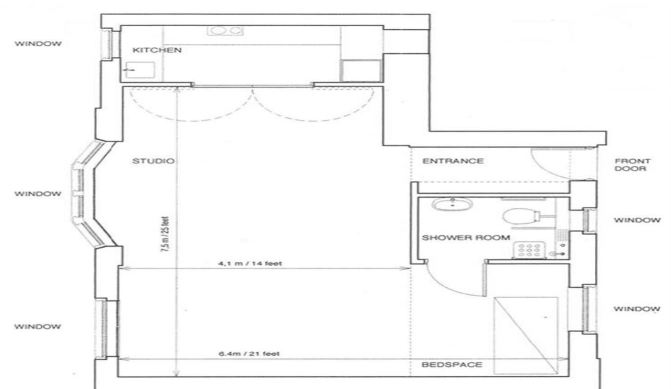
There will be group and individual professional development opportunities throughout your residency. Activities will respond to your art practice and professional needs, which can include studio visits, critical discussions, gallery tours and organised social events. Artists are actively involved in shaping the programme and contributing to our artist community. Acme respects your privacy and events and open studios are not a requirement of your residency. We can offer support and advice should you choose to host a public event.



The Acme Fire Station © Acme Archive



Australia Council unit, Acme Fire Station © Acme Archive



Studio floor plan gives an indication of the space, but this may be subject to change

Each studio measures approximately 538ft² (50m²) with a ceiling height of 8.5ft (2.6m). There is a bedroom area, a bathroom with shower, a kitchen with electric hobs, oven, fridge, freezer; and an open plan area for working.

Heating

Wall mounted electrical heaters are supplied, with secondary glazing fitted to reduce heat loss.

Laundry

There are shared laundry facilities on the ground floor.

Bookable Communal Spaces

Three shared spaces are available for use in the yard at the Fire Station during your time. A small 'dirty' shared studio that can be used for a variety of purposes and is particularly useful for large pieces and work with messy substances. A small co-working /multi-use space and a partially soundproofed music room are available to be booked out for short periods.

Bicycle

There is a bicycle, helmet and bike lock available to you during your residency.

Restrictions

Each studio is relatively small and is not suitable for heavy machinery or processes. There is also a limit to the scale of work that can be brought in or out of the units – for example, a stretched canvas 7ft x 12ft (2.1m x 3.6m) would be the maximum size.

Parking

The rear yard has five shared parking spaces.

Amenities provided:

WIFI
Kitchen utensils, pans, implements
Sofa
Study desk and chair
Bedding
Bed linen
Towels
Monitor

Not provided:

Computer
Mobile phone
Food

Families and guests

The unit will accommodate couples and Acme can arrange additional bedding for additional guests. However, Fire Station work/live units are not family friendly.

Accessibility

Acme are committed to access and diversity in all areas of operation, including service delivery, communication and publicity, staffing, and governance. Access needs for living quarters during a residency can be accommodated upon request.

Programming

To ensure that you maximize your residency experience we encourage you to maintain contact with Acme throughout your stay and participate in the social and networking activities offered as part of the programme.

Acme has an extensive list of visiting arts professionals who contribute to the programme by providing one-to-one studio visits and group sessions. These include local artists as well as curatorial staff from organisations such as Tate, Hayward Gallery, Serpentine Galleries, Artangel, Chisenhale Gallery and a wide range of other cultural organisations. If there are specific individuals you wish to organise a session with, contact Acme as soon as possible to discuss your ideas.

In addition to providing one-on-one meetings with London arts professionals, there is an opportunity to realise a forward-facing event (solo or group). If this is of interest to you, you are encouraged to contact Acme as soon as possible (pre-residency) to discuss your ideas. Acme also encourages organic ideas that take shape during the residency period.

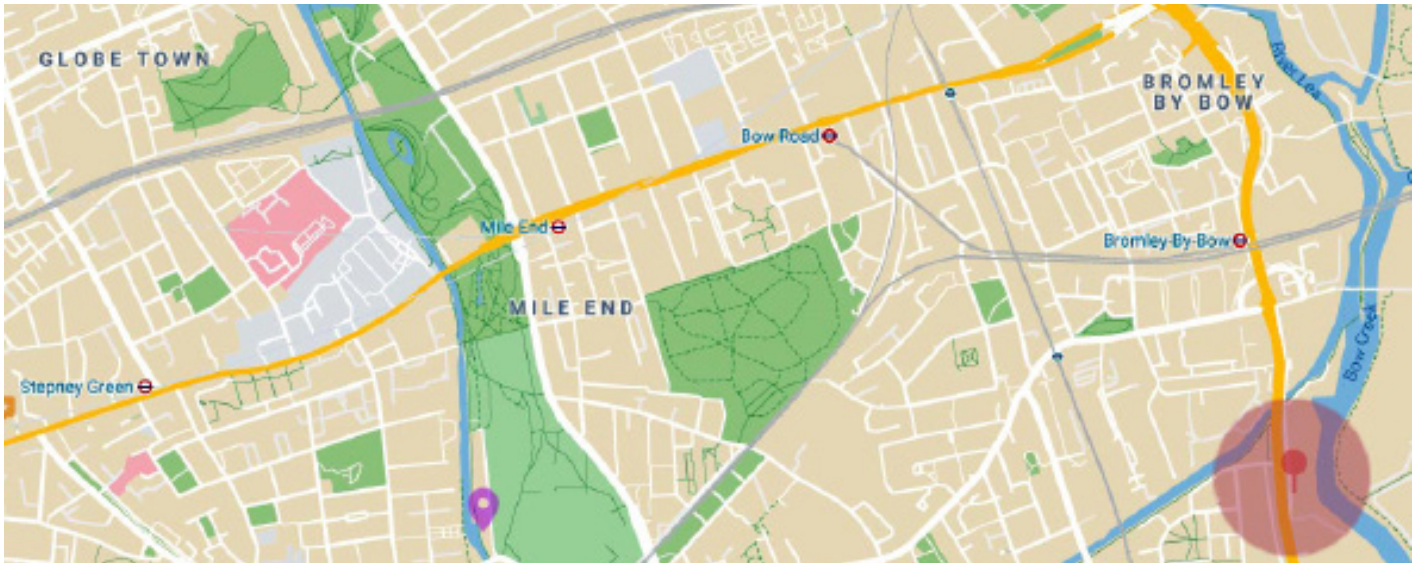
Previous projects that have been supported include: short artist exhibitions, lectures, talks, performances, open studios, directed meal events and hosted discussion (both small-scale private invite-only, and larger public groups). Artists are expected to take ownership of these events themselves, with Acme assisting with connections, logistical advice, and communications.



TextaQueen event at 198 Gallery, 2019 © Acme Archive



Studio visit with Dominic from Luton, 2018 © Acme Archive



London is one of the art capitals of the world and is the main focus in Britain for cultural activities. It houses major collections, public and commercial galleries, dealers and collectors of contemporary art as well as a wide array of performance and live art venues and events.

Over the last 30 years the East End has seen an influx of artists and art activity. Many artists live in the immediate vicinity and with the major regeneration of the area due to the London 2012 Olympics being based nearby, this part of London is continuing to see rapid development. The established East End artistic areas of Bethnal Green and Shoreditch are a 5-10 minute bus ride away.

Transport

The Fire Station has excellent transport links. If you plan to use public transport frequently you can buy an Oyster Card or you can use your bank card using Contactless for the same cost.

We recommend downloading the free app Citymapper (iOS/Android) on to your phone, which will give detailed directions and recommended transport routes in London, or buy a London A to Z street map.

Tube & DLR

The Fire Station is served by the District and Hammersmith & City Line Underground, nearest station is **Bromley-by-Bow**, situated on the opposite side of the dual carriageway.

See London Tube [map](http://tfl.gov.uk) at tfl.gov.uk

Docklands Light Railway (DLR) is 400 metres away, nearest station at Langdon Park. The DLR links to Bank and Tower Gateway and connects with the District and Hammersmith & City Underground services. Trains run approximately every 10 minutes and there is a ramp and lift to the platform.

Bus

London buses do not accept cash. Use your bank card or Oyster card to pay when boarding the bus. You only need to tap once at the beginning of your journey.

Other local features

Other facilities include an increasing number of small shops, pubs, large Tesco supermarket and The Queen Elizabeth Olympic Park with its opened landscaped park and leisure facilities is less than a mile away, The Aquatic Centre is a state of the art 50m swimming pool designed by Zaha Hadid, and retail at Westfield Shopping centre in Stratford.

Financial arrangements

The Australia Council leases the work/live studio and covers the costs of rent and outgoings, such as heating and electricity. Acme manages and administers the studio, which includes purchasing necessary items, organising repairs and arranging for bills, such as electricity and municipal council tax to be paid.

Artists are responsible for supplying their own food and personal requirements during the period of the residency, as well as any costs associated with the production of artwork.

A phone is available in the apartment and WIFI across the Fire Station. Telephone and all other utility bills are received at the Acme office. Artists are responsible for paying their own telephone usage costs in excess of £30.

London is an expensive city to live in, with particularly high food and transport costs, so artists are advised to budget carefully.

Insurance

Artists are responsible for organising and paying for their own travel insurance for their residency, including health insurance that is required by their country of residence. Proof of cover should be provided to Australia Council prior to commencing the residency. Note: neither Australia Council nor Acme will be held responsible for loss, damage or accidents occurring within or relative to the residential studio. Artists are responsible for any damage caused to the building or inventory (beyond normal wear and tear) and must report this to Acme immediately. Travel insurance will need to also cover personal belongings of the artists as these are not included in Acme's building insurance.

Overseas Travel Arrangements

You make your own travel arrangements, at your own expense, after notification of your successful application for the studio/payment of your grant. The residency can only occur within the time period nominated by the Australia Council in your agreement. In exceptional circumstances, it is sometimes possible to amend your arrival and departure dates by a reasonable period. If you wish to change your dates, please contact the Australia Council at least four

weeks before travelling.

Before finalising your travel arrangements, you should contact the Residencies and Awards team at Acme, by phone or email, to let them know your plans and ensure that access can be arranged for your intended day of arrival.

You will need to plan your arrival during Acme office opening hours, which are Monday – Friday, 9.00am – 5.00pm.

Please inform Australia Council of your itinerary before travelling.

Visa Requirements

The Australia Council does not advise or provide information on visas. For up-to-date entry visa requirements, you must check with the appropriate embassy or consulate and arrange your visa requirements well in advance of your departure date. All Australian travellers are strongly encouraged to check the Australian Department of Foreign Affairs website www.smartraveller.gov.au prior to travel.

Weather

July is Britain's warmest month, January the coldest. Spring is colder than Autumn on average, and is often prone to extremely cold days.

The Australia Council works in partnership with residency providers to ensure that residents maximise their residency experience by engaging with the international arts community.

We encourage residents to maintain contact with their hosts throughout their residency and to participate in the social and networking activities offered as part of the residency program.

Acme works with each residency artist to maximise their residency experience. In addition to providing group events, there is a small additional budget available for artists who would like to realise a forward-facing event (solo or group), or undertake one on one mentoring with London arts professionals as part of their residency period. If this is of interest to you, you are encouraged to contact Acme as soon as possible (pre-residency) to discuss your ideas. Acme also encourage organic ideas that take shape during the residency period.

Previous projects that have been supported include short artist exhibitions, lectures, talks, performances, open studios, directed meal events and hosted discussions (both small-scale invite only, and larger groups). Artists are expected to take ownership of these events themselves, with Acme assisting with connections, logistical advice, communications, and small-scale financial support.

Acme has an extensive list of artist mentors who contribute to the programme, mentors include curatorial staff from organisations such as Tate, Hayward Gallery, Serpentine Galleries, Artangel, Chisenhale Gallery and a wide range other cultural organisations and freelance specialists.

While you may conduct short trips away from the residency, it is expected that you are not absent for an extended period (exceeding two weeks at a time). facilities to the residency provider and/or Australia Council contact.

Arts Information

You may find the following websites useful to keep informed of exhibition openings and other interesting events:

artrabbit.com

Lists arts events and venues, also has a section for future exhibitions that lists private view information and an online forum.

newexhibitions.com

Lists art exhibitions bi-monthly, there is also a paper version of this list available for free in most London art galleries.

timeout.com/london

This is the online version of the magazine. It includes information about the arts but is a more general guide of events, talks, festivals and performances on in London. Also has reviews and feature articles.